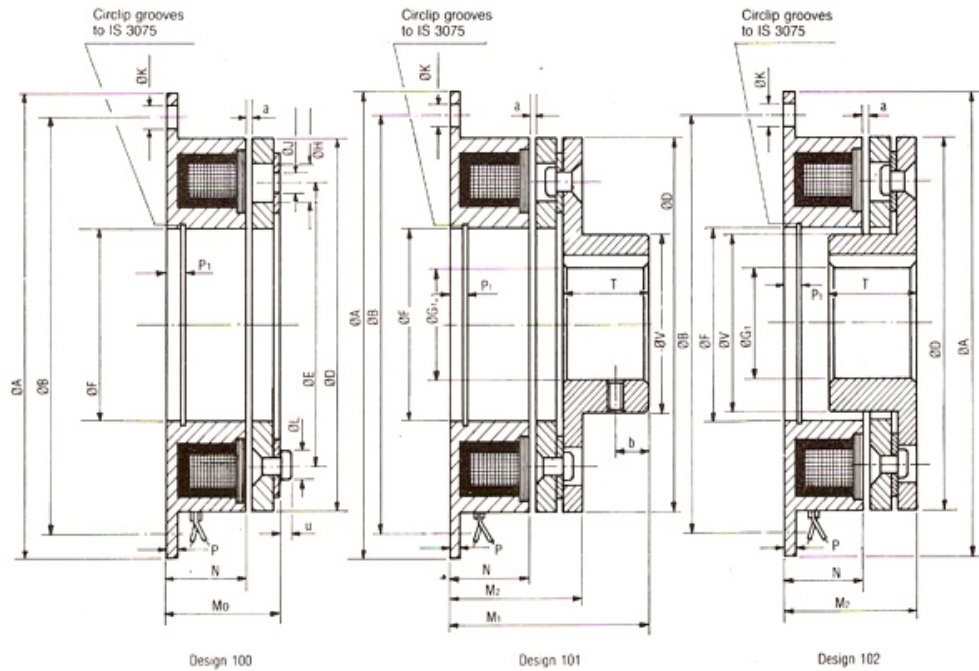


Magpower Linksys



DIMENSIONS : TYPE EB : ELECTROMAGNETIC BRAKE

SIZE	08	10	12	15	19	23	29
Torque (Nm)	7.5	15	30	60	120	240	480
Max. Speed (min ⁻¹)	8000	6000	5000	4000	3000	3000	2000
Input Power at 20°C (W)	11.5	16	21	28	38	45	70
φ A ₁₆	80	100	125	150	190	230	290
φ B	72	90	112	137	175	215	270
φ D	63	80	100	125	160	200	250
φ E	46	60	76	95	120	158	210
φ F ^{H0}	35	42	52	62	80	100	125
φ H	6.3	8	10.5	12	15	18	22
φ J	3 x 3.1	3 x 4.1	3 x 5.1	3 x 6.1	3 x 8.2	3 x 10.2	4 x 12.2
φ K	4 x 4.5	4 x 5.5	4 x 6.6	4 x 6.6	4 x 9	4 x 9	4 x 11
φ L	3 x 5.5	3 x 7	3 x 9	3 x 10	3 x 13	3 x 16	4 x 20
M ₀	22	24.5	27.9	31	35	41.4	47.9
M ₁	37	44.5	52.9	61	73	89.4	102.9
M ₂	25.5	28.5	32.9	37	42	50.4	58.9
N	18	20	22	24	26	30	35
P	2	2.5	3	3.5	4	5	6
P ₁	3.5	4.3	5	5.5	6	7	8
T	15	20	25	30	38	48	55
U	1.6	1.8	2.4	2.8	3.2	4	4.3
φ V	28	33	43	50	66	84	106
a	0.2	0.2	0.2	0.3	0.3	0.5	0.5
b*	5	6	6	10	10	15	20
Max Bore φ G ^{H7}	17	20	30	35	45	60	80

Enhanced models up to 2500 Nm. torque also available.

Catalogues on request.

All dimensions in mm. Alterations reserved.

Standard Bores : 11, 14, 19, 20, 24, 28, 32, 34, 38, 42, 48, 55, 60, 70.

* Tapped hole on dimension 'b' on request.

Standard Voltages : 24VDC, 96VDC, 190VDC. Other voltages at extra cost.

Lead wire length = 400 mm. • 1 Nm = 0.102 Kgm. = 0.737 lb.ft.