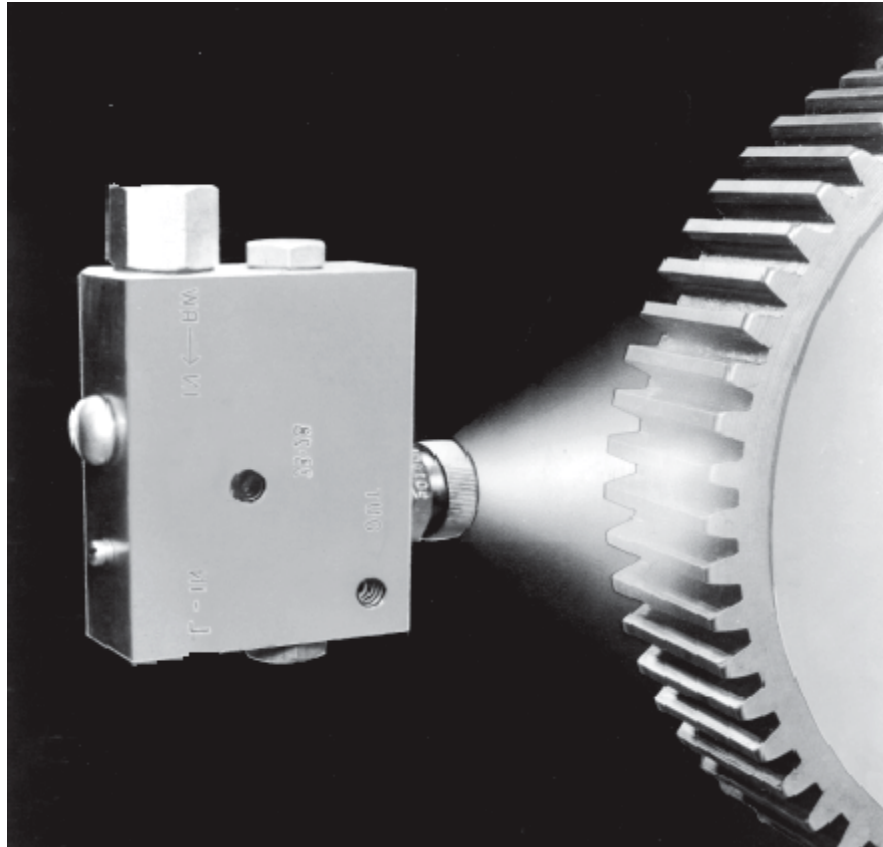


Gear-Spray Lubrication System



S

V

M

9

4

RIKKON LUBE

203, Nageswara Rao Road, 2 nd Extn,
Athipet, Chennai- 600 058.

Tel: 91-44-26255880 / 01

Fax: 91-44-26245128

Email: sales@rikkonlube.com

Website: www.rikkonlube.com.

www.indiamart.com/rikkonlube



Pumps

These pneumatic barrel pumps SVM 9401-YL with one outlet and SVM 9402-YL with two outlets are designed for use in spray systems for the supply of adhesive lubricants (NLGI 0 and 00). SVM 94 pumps are placed directly into 200 liter drums. They do not require a follower plate, thus the supply of lubricant is possible even if the drum is severely dented. With the aid of an optional stand and winch unit, it is easy to exchange barrels.

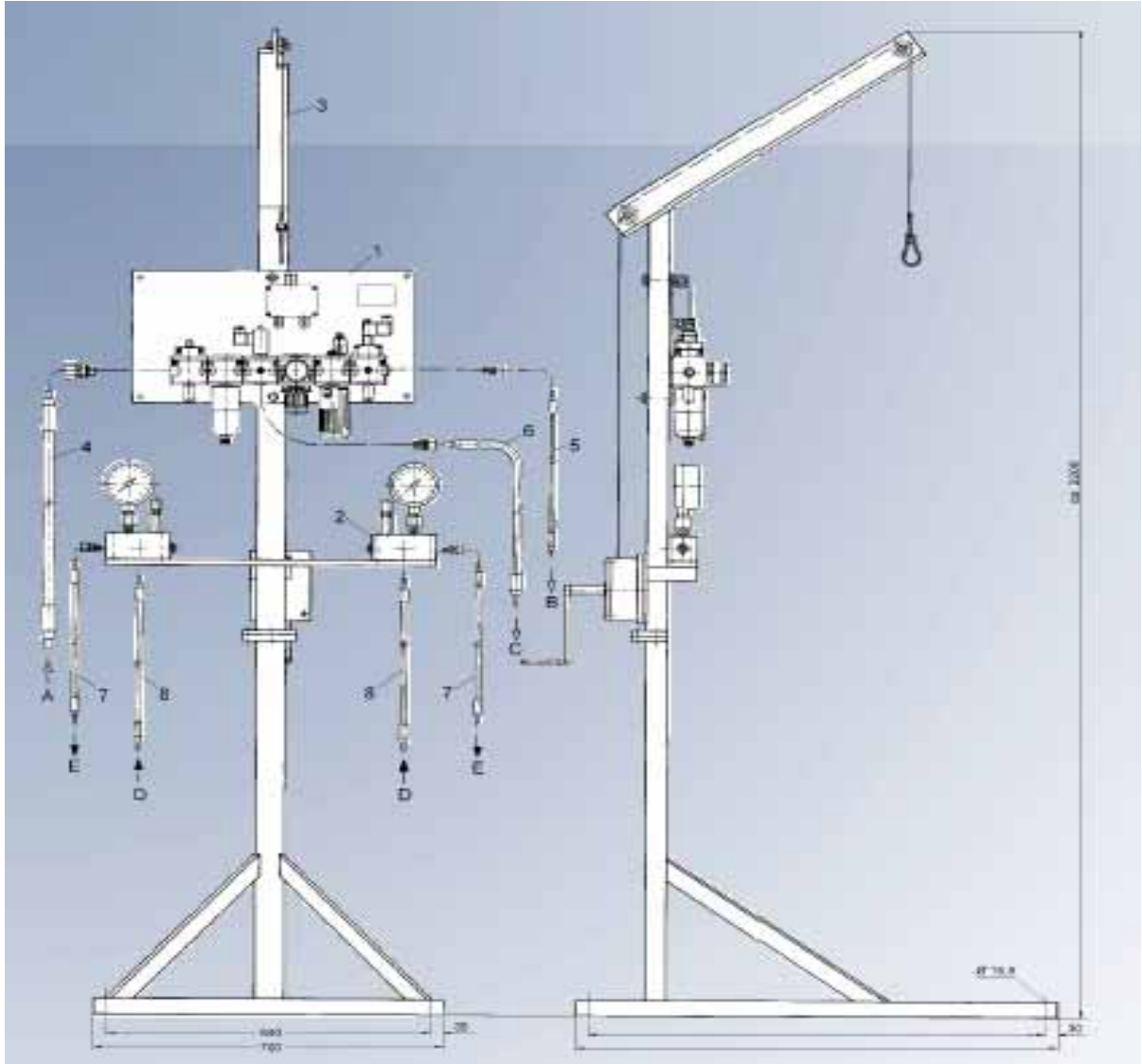


Description	Number of Outlets	Lubricant Output/stroke	Low level
SVM 94	1	1.1 cm ³ (0.067 in ³)	No
SVM 94	1	1.1 cm ³ (0.067 in ³)	Yes
SVM 94	2	2x1.1 cm ³ (2x0.067 in ³)	No
SVM 94	2	2x1.1 cm ³ (2x0.067 in ³)	yes

Technical Data:

Maximum operating pressure	300 bar (4350 psi)
Driving pressure	Minimum 4 bar (58 psi) maximum 10 bar (145 psi)
Air inlet connection	1/4 NPT
Pneumatic drive ratio	40:1
Sound level	<70 dB(A)
Lubricant outlet	G 1/4 f (BSPP)
Drum type	For 200 l lidded barrels acc. To DIN 6644
Dimensions (LxWxH)	610x610x985 mm (24x24x38.8 in)

Stand with winch for SVM 94



Dimensions (LxWxH): 950x700x2200 mm

Item Designation:

A compressed air from compressor

B compressed air to pump

C compressed air to spray unit

D lubricant from pump

E lubricant to spray unit

2.pressure relief device

3.stand with switch

4.low-pressure hose OD 16x1040 with 20mm stud

5.high-pressure hose OD 16x1540 with 10mm stud

6.low-pressure hose OD 13x1040 with 15mm stud

7.high-pressure hose OD 8x1040 with 10mm stud

8.high-pressure hose OD 8x1540 with 10mm stud

SPRAY NOZZLES

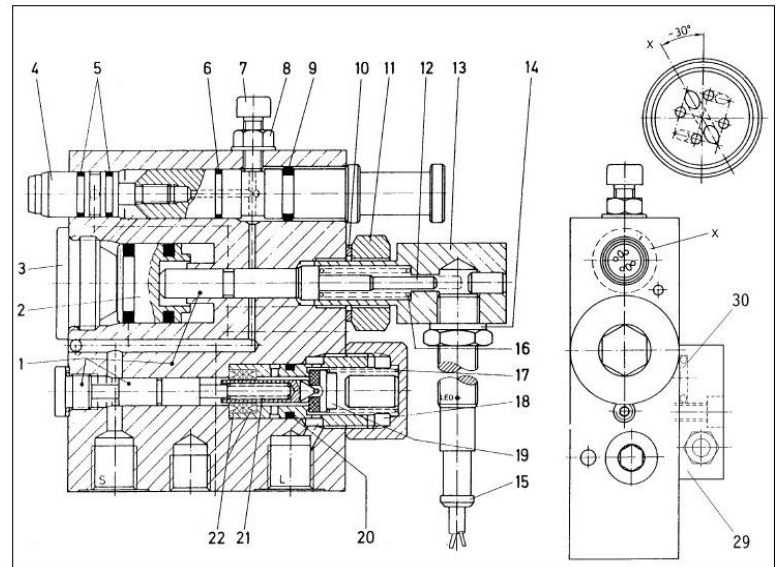
RIKKON spray nozzles are designed for the spraying of adhesive lubricants on pinions and open gears.

The nozzles are available in several versions that cover a wide range of applications and functional features. The GS 26 nozzles can monitor both the flow of air and lubricant within the nozzle. The GS26 nozzles can be monitored externally by means of a progressive metering device and the air can be controlled with an air solenoid valve. Complete mounting plates are available for easy alignment



Nozzle & Part Number:

Mounting Style	Controlled Nozzles With monitoring Proximity Switch
Mounting plate	GS-26



Technical Data of GS26:

110 mm (4.3 in) x 140 mm (5.5 in) x 45 mm (1.8 in)

Lubricant output	0.2 – 20 cm ³ (0.0122 – 1.22 in ³) per minute
Spray surface coverage	approx. 150 mm (6.0 in) wide and 80 mm (3.3 in) high
Mounting distance	150 – 200 mm (6 – 8 in) from nozzle to application point
Air pressure uncontrolled nozzle	3 bar (43 psi), controlled nozzle: 6 bar (87 psi)
Air requirement approx	max. 40 NI/min (free air) for controlled nozzle
Operating pressure max	max. 120 bar (1740 psi) for controlled nozzle
Connections GS 26	Air: G 1/4 female (BSPP) lubricant: G 1/4 female (BSPP)

RIKKON LUBE
Reliable Lubrication